



South Tyneside Council



**South Shields New transport Interchange  
External Lighting Statement**

## External Lighting Statement

The lighting design within this report forms part of the planning application for South Shields transport interchange.

This is illustrated on Cundall's proposed external lighting drawing BSXX(63)4001 issue B which provides detail of the proposed scheme.

The external lighting scheme for the South Shields Interchange at Keppel Street/Fowler Street will be designed in accordance with CIBSE Lighting Guide LG6 (outdoor environment) and BS5489 Part 1.

The new external lighting scheme will also be designed in line with the recommendations of the institute of Lighting Engineers (ILE) for the reduction of obtrusive light.

The external lighting installation to the bus interchange area has been designed to give driver awareness and for public safety.

The lighting installation will include:

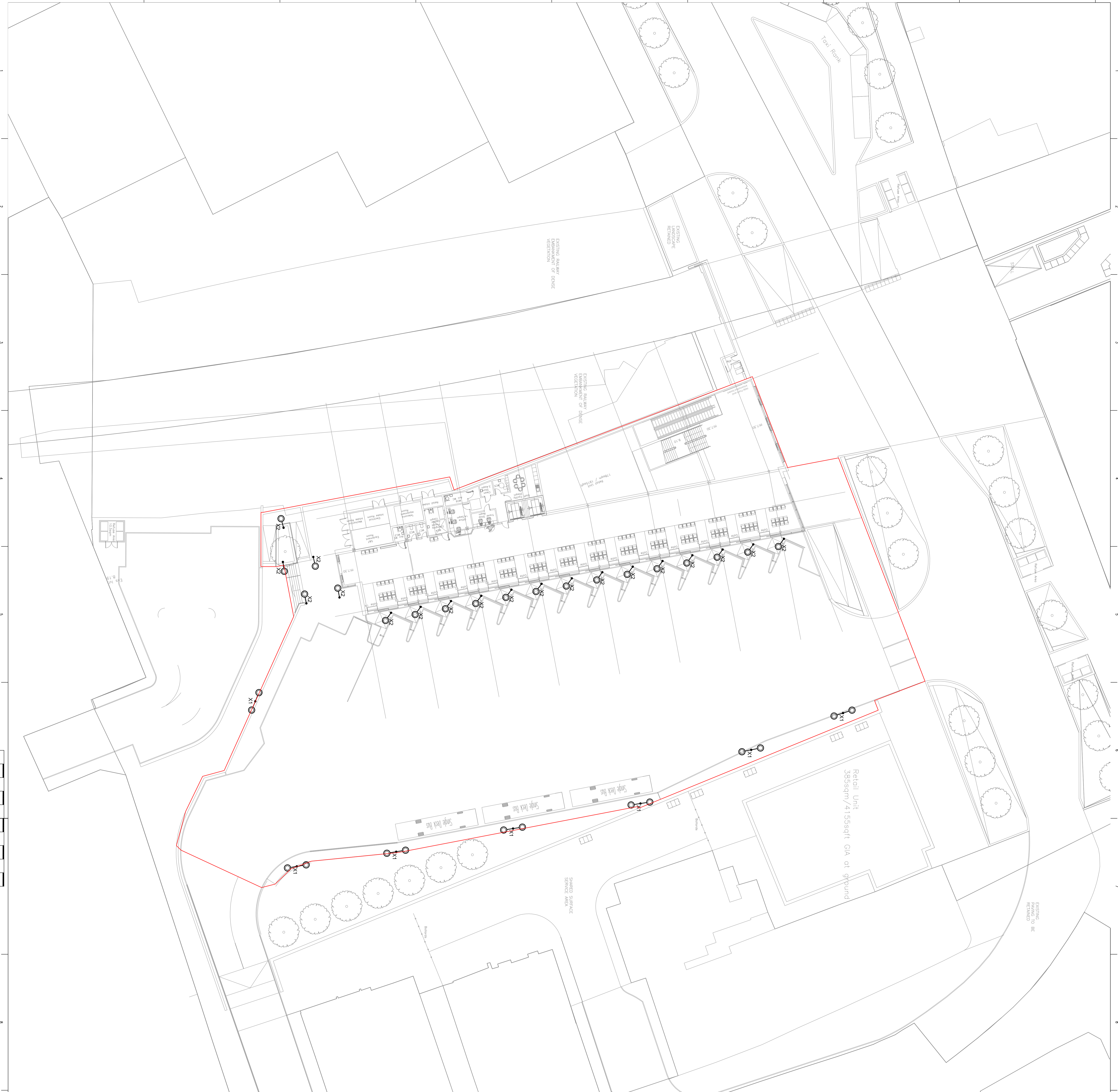
- 12 metre Abacus base hinge steel lighting columns with twin mounted LED light fittings on the perimeter of the bus interchange opposite the bus concourse.
- 4 metre conical steel lighting columns with a single LED light fitting on the steps, ramp area and along the bus stopping area.

The average service illuminance for the external areas are as agreed with Nexus as follows:

- The main bus interchange road and drop off area 50 Lux
- The steps and ramp area to the interchange 30 Lux

The external lighting will take into account the levels required to allow CCTV security cameras to operate effectively.

The external lighting for the bus interchange will be controlled via time switch and photocell arrangement. The hours of illumination will be agreed with Nexus and South Tyneside council based on operational hours.



TAG	APPEARANCE	DESCRIPTION
X1		2M POLE-MOUNTED LED LUMINAIRE MOUNTED ON 12M COLUMN.
X2		POLE-MOUNTED LUMINAIRE ON 6M COLUMN
N/A		CONICAL STEEL ARM LIGHTING COLUMN - FINISHED TO MEET ARCHITECTURAL REQUIREMENTS.
N/A		12M ABACUS HEAVY DUTY STAKE FINISHED TO MEET ARCHITECTURAL REQUIREMENTS.

1009701 A0

Revised By: [Blank]  
 Drawn By: [Blank]  
 Check By: [Blank]  
 Date: [Blank]

DO NOT SCALE FROM THIS DRAWING

- Notes**
- FOR RED LINE BOUNDARY REFER TO ARCHITECT'S DRAWINGS.
  - BUS SERVICE AREA ILLUMINATED TO 50 LUX @ 0.4M UNIFORMITY
  - 12M COLUMNS TO SERVE BUS STATION ONLY OPERATED & CONTROLLED VIA BUS STATION TO SUIT OPERATING HOURS. REFER TO ARCHITECT'S DRAWINGS FOR DETAILS.
  - 12M COLUMNS TO BE RISE RANGERS IN ACCORDANCE WITH NEXUS REQUIREMENTS FOR MAINTENANCE.

Rev	Description	By	Check	Date
B	3000'S IRRADIATED LIGHTING	SH	SH	AB
A	1000'S IRRADIATED LIGHTING	LL	SH	AB

Project: SOUTH SHIELDS INTERCHANGE  
 KEPPEL STREET / FOWLER STREET

Client: MUSE DEVELOPMENTS / NEXUS / STC  
 Architect: THE HARRIS PROJECT

The ELECTRICAL ENGINEERING SERVICES  
 PROPOSED EXTERNAL LIGHTING

Drawn By: BSXX634001	Drawing Status: PLANNING
Job No: 1009701	Scale: 1:200
Designer: LL	Checker: BH
Validator: AB	Maker: B

**CUNDALL**  
 Consulting Engineers  
 Headley House, Ringport Centre,  
 Colchester, Essex, CO3 3LU  
 Telephone: +44 (0)1791 213 1515  
 Website: www.cundall.com